

6

5

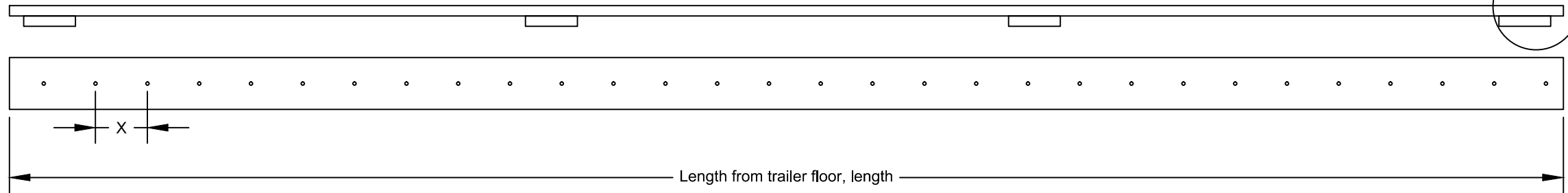
4

3

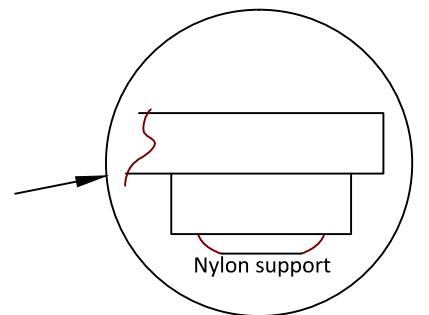
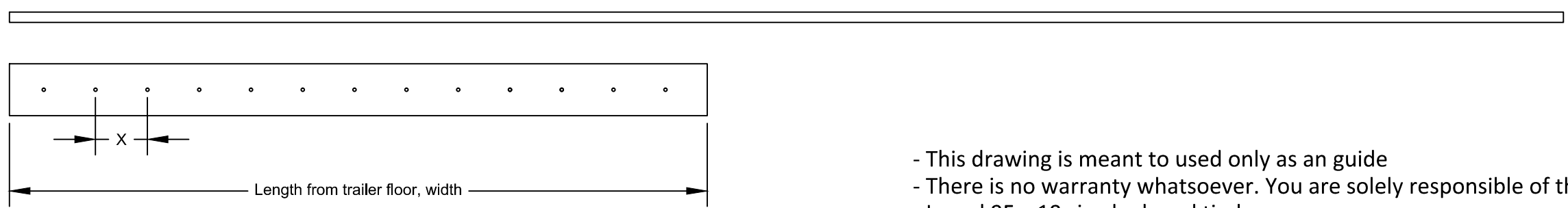
2

1

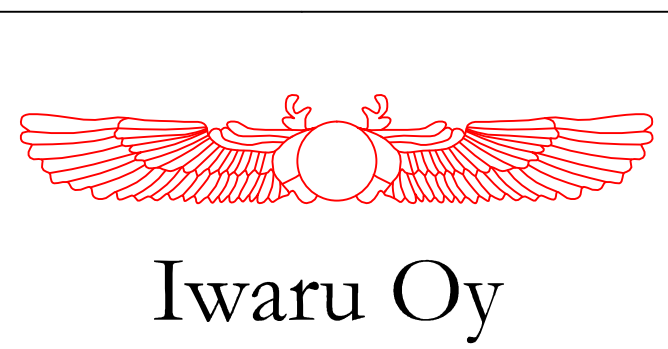
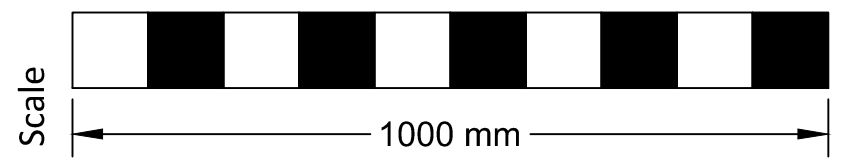
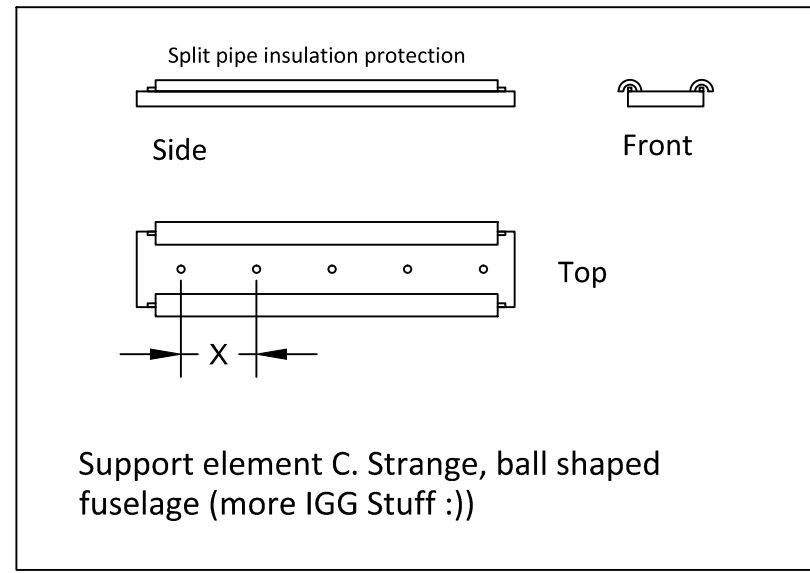
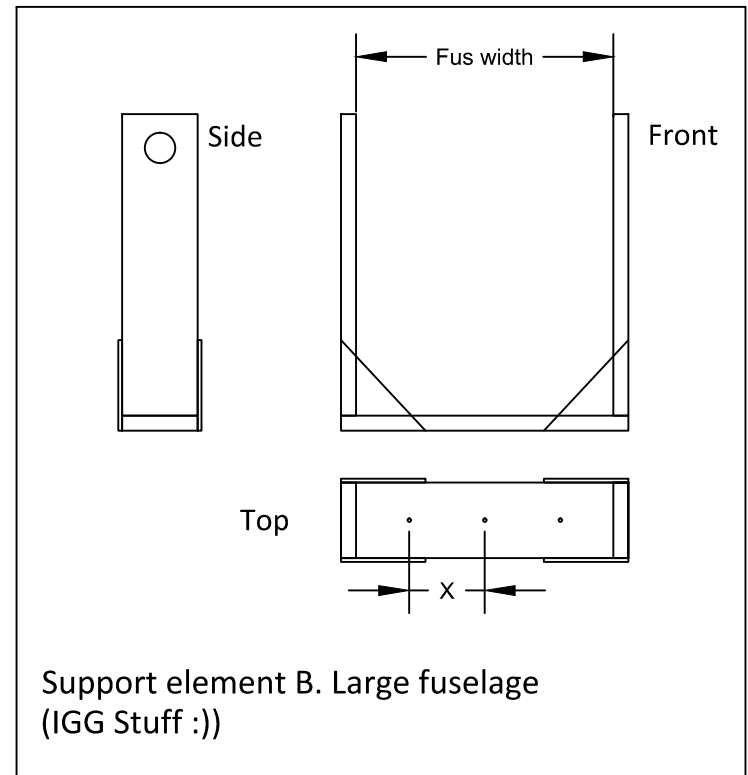
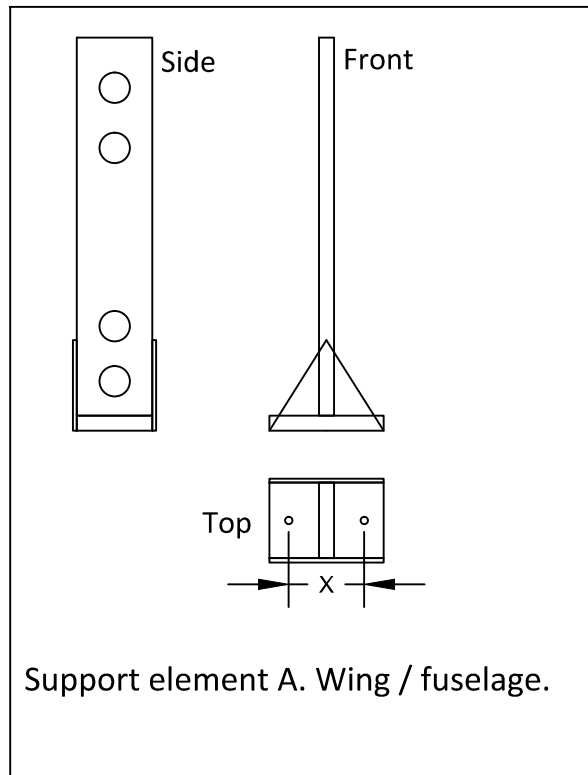
Longitudinal timber



Cross-direction timber



- This drawing is meant to used only as an guide
- There is no warranty whatsoever. You are solely responsible of the function of structure
- I used 95 x 19 sized, planed timber
- Add blind nuts to holes of longitudinal timber, where needed.
- Assemble as directed in HowTo-article.
- X is spacing of holes. In my case it is 100mm. It has to be constant in all elements.



Tuomas Otala, Iwaru Oy			
TITLE Model aeroplane transport support			
SIZE A3	PROJECT 169-01	(C) Copyright 2015	REV 01
SCALE 1:10	19.1.2013	SHEET 135-02-6	

6

5

4

3

2

1